

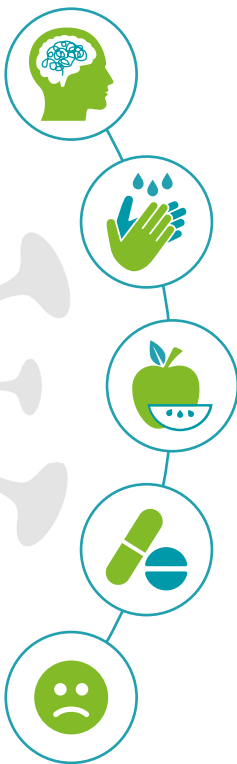
Passport Behavioral Health C.O.V.I.D. Screener for Primary Care

Description

The purpose of this tool is to screen for behavioral health or social determinants of health issues conjointly in one questionnaire. This tool is to be used by Passport Health Plan by Molina Healthcare network providers in the primary care setting to identify opportunities for intervention related to behavioral health or social determinants of health needs.

Scoring: Consider one or more positive responses to the Passport Health Plan Behavioral Health C.O.V.I.D. Screener as a positive screen.

Since the COVID-19 outbreak:



Concern: Has your patient been bothered by feeling nervous, anxious, or on edge?

Obsessions: Has your patient developed new behaviors in response to symptoms (for example, avoidance, obsessive handwashing, and hypervigilance)?

Void of Resources: Has your patient been worried about how they are going to access food, housing, or other necessities?

Increased Use: Has your patient increased their use of alcohol, prescription drugs for non-medical reasons, or illegal drugs?

Depression: Has your patient been feeling down, depressed, or hopeless?

If your patient answers “**yes**” to any of these questions, reach out to the local **Passport Health Plan Case Management Team** for assistance with care coordination.